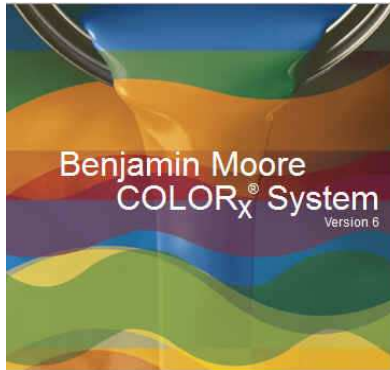


Benjamin Moore & Co. Moore's COLOR_x® System Release Notes & Installation Guide Version 6.28.0000



COLOR_x version 6.28.0000 contains the prescriptions for the new Ultra Spec 500 0X bases in Canada. It also contains new products and updated Benjamin Moore prescriptions. For a complete list of updated prescriptions, see page 4.

New Base in Canada

Ultra Spec 500 0X base in K537 and K538

New Products

Corotech V210 Water Reducible Alkyd

Discontinued Products U.S. Only

Several old discontinued products have been removed from the Select Product Code drop down list. If needed, these products can be reactivated back on the product drop down list by following the steps beginning on page two. A list of the products that were removed can be found on the last page of these Release Notes.

New Competitive Color Collections

The following color collections have been added to this release of COLOR_x.

- 1- Rona Collection
- 2- Style Crest Siding

Frequently Asked Questions in COLOR_x Help

A new FAQ document has been added to the COLOR_x software. In COLOR_x, click on Help, then choose FAQ to view the document.

The FAQ document on the COLOR_x software and color matching techniques is also available for download on the mybenjaminmoore.com at:

Product, Color & Technology>Moore's COLOR_x Information>Solutions to COLOR_x FAQs. Choose the "Save" button to save the document as an Adobe PDF file. If you have a problem downloading the document, call your Color Technology representative.

Help

While in the COLOR_x application, you can view the Operator's Manual and the Quick Start Guide by clicking on Help, then choose COLOR_x Help for the manual or COLOR_x Quick Start.

Competitive Color Prescriptions

We have amassed an extensive collection of colors from our competitor's color merchandise. This information is available in our Color Search option in COLOR_x. To see if a color exists, simply follow the same procedure you would for a Benjamin Moore color. Enter a color number or name, along with a product, and either select an individual company or check the "Search All" box above the Select Company drop down list.

Unlike a Benjamin Moore color which displays a prescription created and tested by our Color Prescribing Lab, we store just the measurement of the competitive color. That measurement is run in our color matching application to generate a color prescription the same as if you measured a custom color with a spectrophotometer and calculated a match.

Therefore, when a customer requests a match to a competitive color, a retailer should follow this procedure.

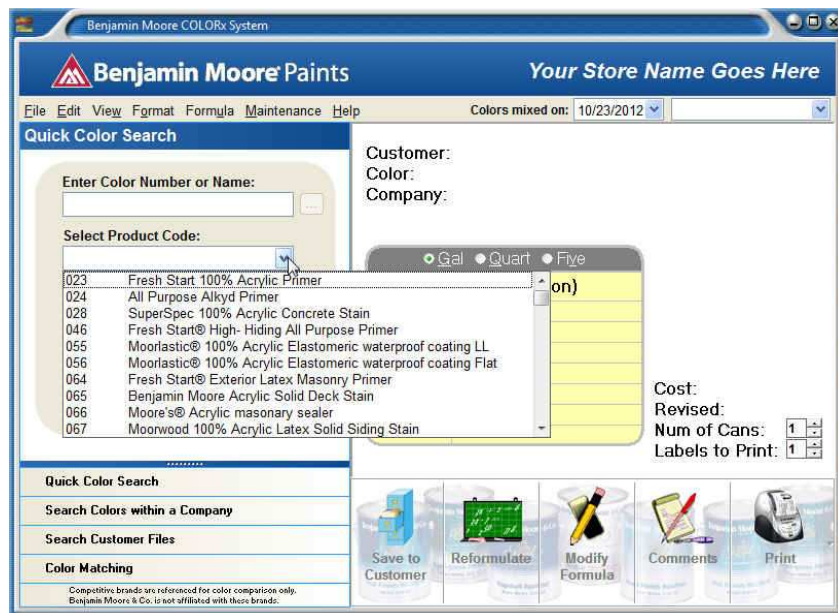
First, look up the color in COLOR_x and determine if we have it in our system. If it is, a prescription will be calculated and displayed. Click on the button "Closest BM Color", this will list the five closest Benjamin Moore colors. Suggest to the customer that they look at our closest colors and see if that meets their color requirements. This has two benefits, if the color is acceptable, then you have a tested Benjamin Moore prescription to make the color and you have changed a competitive color specification to a Benjamin Moore color specification.

Second, if you or the customer has a sample of the competitive color merchandise then match the color merchandise just as you would match a custom color. Since the customer will be judging the color to the merchandise sample that should be your target. Depending on the age and condition of the merchandise, it may not represent what we have stored in COLOR_x.

Finally, if the customer does not like our closest color and no sample of the color is available then use the calculated match in COLOR_x.

If you have any questions, please contact your Color Technology Rep. or call 800-809-9213.

Reactivate Products in the Select Product Code Drop Down Window



Pictured above is the **Select Product Code** drop down window on the main screen

To reactivate any product that has been turned off, follow the steps below.
From the main screen, click on **File**. Now choose **Modify Store Options** as shown in figure 1.

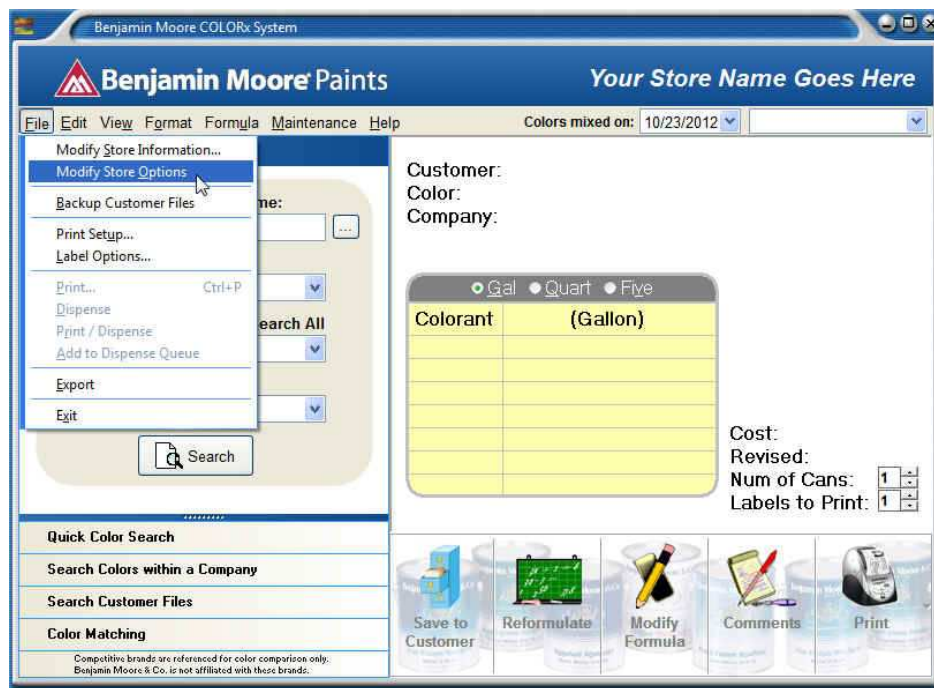


Figure 1

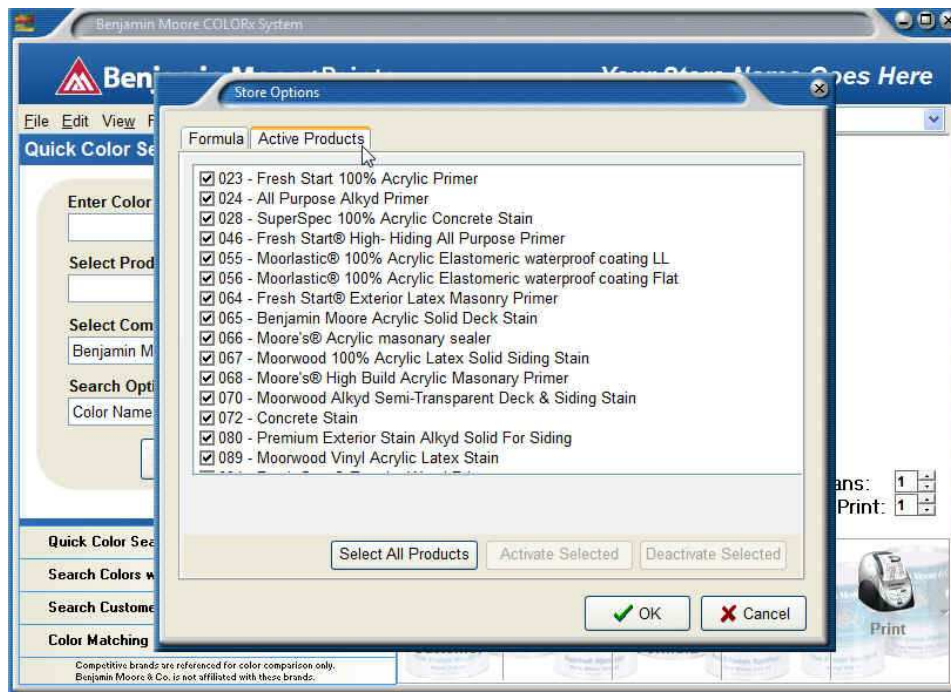


Figure 2

Next, click on the **Active Products** Tab and click to place a check mark in the box next to the product(s) that you wish to activate. Then click on the OK button as shown above.

The product(s) will now appear in the **Select Product Code** drop down list and will be available for color matching and prescription lookup.

Prescription Changes since ColoRx Version 6.27.6000 (United States)

Many prescriptions for products N4003X, N4013X, N4033X and N5391X have been modified. Please refer to the revision date when calling up prescriptions for these products. A revision date after 12/13/2013 indicates a change in the prescription since ColoRx version 6.27.6000.

The following colors had their prescriptions changed in several products: 266, 833, 1168, 2004-10, 2083-40, 2106-50, 2130-20, 2133-20, 2135-30, 2161-10, HC-155, HC-168
A revision date after 12/13/2013 indicates a change in the prescription since ColoRx version 6.27.6000.

The following colors have prescriptions added for product N122: adobe clay, antelope, aquatone, bisque, blue hill, blue quarry, blue slate, blue stone, dusty green, english channel, granite gray, green silver, haze gray, lava stone, loden, oxford blue, pink beige, rustic beige, seaside green, showroom white, sierra sand, silver green, soft blue, sparrow, teal tone, tidewater and winter blue.

The following prescription has been modified for product 122: 2138-50

The following prescription has been modified for product 501: 2000-40

The following prescriptions have been modified for product 508: 967, OC-130

The following prescriptions have been modified for product 513: 858, 881, OC-20

The following prescriptions have been modified for product 522: 199, 2166-40, AF-15

The following prescriptions have been modified for product 524: 394, 414, 428, 519, 540, 541, 938, 2137-60, 2166-40, OC-52, OC-136

The following prescription has been modified for product 526: 2166-40

The following prescriptions have been modified for product 528: 2110-20, 2166-40, AF-15

The following prescriptions have been modified for product 532: 148, 767, 1284, 1319, 1461, 1657, 1668, 2151-70, 2165-60, 2166-40, HC-152, OC-113, oriental silk

The following prescription has been modified for product 547: 2107-10

The following prescriptions have been modified for product 548: 2107-10, 2169-10

The following prescriptions have been modified for product 549: 947, 1116, 2107-10, 2108-50, OC-95, PM-29

The following prescriptions have been modified for product 550: 177, 199, 991, 2107-10, AF-355

The following prescriptions have been modified for product 551: 198, 2107-10

The following prescription has been modified for product 640: 1204

The following prescription has been modified for product 792: 1204

The following prescription has been modified for product 1130: HC-168

The following prescription has been modified for product C235: HC-80

The following prescriptions have been modified for product N122: 2124-70, OC-68

The following prescriptions have been modified for product N536: 1046, 2111-70, 2153-50, 2162-50, OC-22

The following prescription has been modified for product N537: 990

The following prescriptions have been modified for product N538: 990, AF-380

The following prescription has been modified for product N539: 1001

The following prescription has been modified for product N540: 990

The following prescription has been modified for product P24: PM-2

The following prescriptions have been modified for product W625: 2138-50, HC-84

Prescription Changes since ColoRx Version 6.27.6000 (Canada)

Many prescriptions for products K4003X, K4013X, K4033X and K5391X have been modified. Please refer to the revision date when calling up prescriptions for these products. A revision date after 12/13/2013 indicates a change in the prescription since ColoRx version 6.27.6000.

The following colors had their prescriptions changed in several products: 2004-10, 2083-40, 2106-50, 2130-20, 2133-20, 2135-30, 2161-10, HC-155, HC-168, OR-141, OR-358

A revision date after 12/13/2013 indicates a change in the prescription since ColoRx version 6.27.6000.

The following colors have prescriptions added for product F122: adobe clay, antelope, blue slate, blue stone, dusty green, granite gray, green silver, lava stone, loden, oxford blue, pink beige, rustic beige, showroom white, sierra sand, silver green, teal tone and tidewater.

The following prescription has been modified for product 1130: HC-168

The following prescriptions have been modified for product F122: 2124-70, OC-68

The following prescription has been modified for product F235: HC-80

The following prescription has been modified for product K122: 2138-50

The following prescriptions have been modified for product K508: CC-40, OR-92, OC-130

The following prescriptions have been modified for product K513: OC-20, OR-120

The following prescriptions have been modified for product K522: 2166-40, AF-15, CC-180, OR-144, OR-228

The following prescriptions have been modified for product K524: 2137-60, 2166-40, OC-52, OC-136, OR-228, OR-313, OR-330

The following prescriptions have been modified for product K526: 2166-40, OR-228

The following prescriptions have been modified for product K528: 2110-20, 2166-40, AF-15, OR-144, OR-228

The following prescriptions have been modified for product K532: 2151-70, 2165-60, 2166-40, HC-152, CC-730, OC-113, OR-228, OR-397, oriental silk

The following prescriptions have been modified for product K536: 2111-70, 2153-50, 2162-50, CC-150, OC-22

The following prescription has been modified for product K537: CC-396

The following prescriptions have been modified for product K538: AF-380, CC-396

The following prescription has been modified for product K539: CC-512

The following prescription has been modified for product K540: CC-396

The following prescription has been modified for product K547: 2107-10

The following prescriptions have been modified for product K549: 2107-10, 2108-50, CC-10, CC-276, OC-95, OR-2, PM-29

The following prescriptions have been modified for product K550: 2107-10, AF-355, CC-180, CC-454, OR-125, OR-240

The following prescription has been modified for product K551: 2107-10

The following prescription has been modified for product K552: 2154-10

The following prescriptions have been modified for product K625: 2138-50, HC-84

The following prescription has been modified for product K628: PM-17

The following prescription has been modified for product K640: CC-122

The following prescription has been modified for product K792: CC-122

The following prescription has been modified for product P24: PM-2

Moore's COLOR_x® System Installation Guide

The Benjamin Moore COLOR_x Prescription Book and Color Matching System programs are incorporated into a single software package. It is available on the Benjamin Moore Retailer Portal, Mybenjaminmoore.com and runs under the Windows® XP, Windows® Vista, and Windows® 7 operating systems.

Minimum System Requirements

- Intel Pentium® processor 500 MHz or higher.
- 1 GB of RAM
- 750 MB of free hard disk space.
- CD or DVD Drive
- Video card capable of supporting 16M colors
- Printer
- Serial or USB port for spectrophotometer
- Windows® XP, Windows® Vista or Windows® 7

Installation

If you are downloading COLOR_x from the Benjamin Moore Retailer Portal, mybenjaminmoore.com, read the "COLOR_x Download Instructions." This will instruct you how to download and install COLOR_x on your computer.

To install COLOR_x from a CD, you must have the Windows desktop displayed. If there are any other applications running, they should be closed before attempting to install the program. If your system has any automatic virus detection software enabled, it should be disabled before installing.

Insert the CD labeled "COLOR_x System" into the CD drive.

The installation procedure will automatically start and bring you to the **Welcome Screen**.

If the installation does not automatically start, click on the "Start" button, usually found at the lower left corner of the screen. The primary menu will pop up. Click on "Run..." and the "Run" dialog box will display. Type "**D:\SETUP**" (where "**D:**" is the designated drive letter for the CD) on the "Open" line and click on "OK".

The Setup Wizard will guide you through the installation.

License Agreement

As you start the installation, the License Agreement screen appears. Be sure to read this license agreement. If you disagree with the terms of the agreement, then click on the Cancel button to exit the installation. If you agree with the terms, then check the appropriate box to continue the installation. The installation will prompt you to select the software region, United States or Canada. The default is United States.

After the successful installation of the software you may be prompted to reboot your system.

Note: If you have a previous version of COLOR_x® 6, this installation will not write over any stored samples or stored customers. They can be still be accessed.

List of Discontinued U.S. Products Removed from the Select Product Code Drop Down Window

064	205	363
N065	207	367
065	210	505
070	215	506
072	216	510
080	219	515
089	220	519
096	223	533
102	224	535
103	225	443
108	234	444
110	235	445
112	237	446
115	240	447
116	246	448
122	271	449
128	274	
133	280	
134	286	
163	289	
C163	305	
175	309	
177	310	
179	319	
180	322	
181	333	
105	362	
204		